

GPS cath®
Popliteal angioplasty and stents

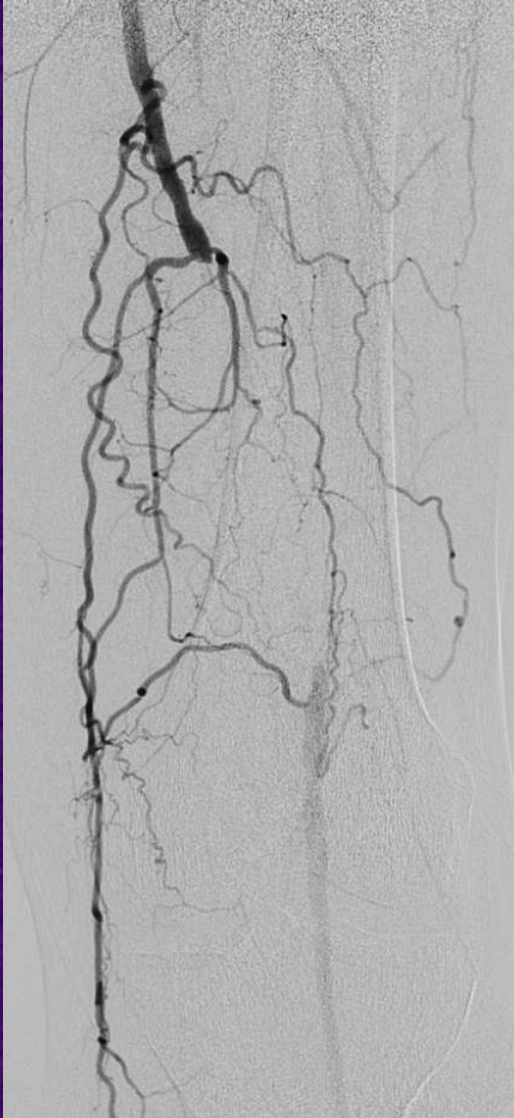
Dr. Kieran Mc Bride

Consultant Interventional Radiologist

Queen Margaret Hospital

NHS Fife, Dunfermline, Scotland

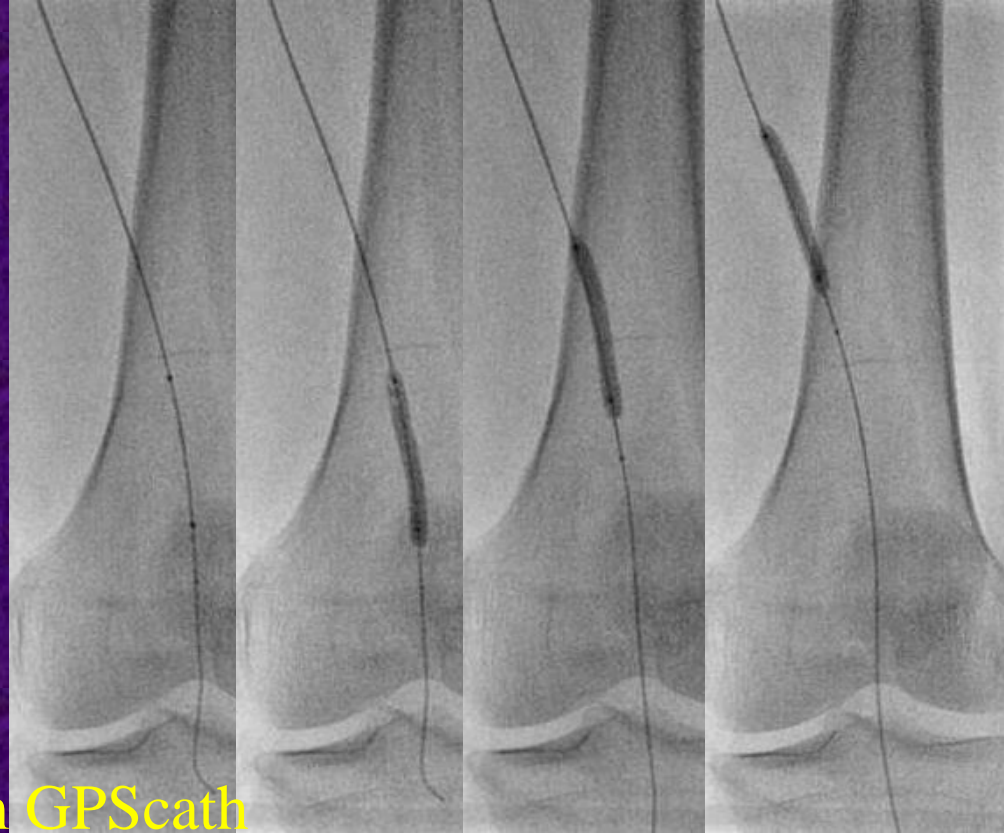
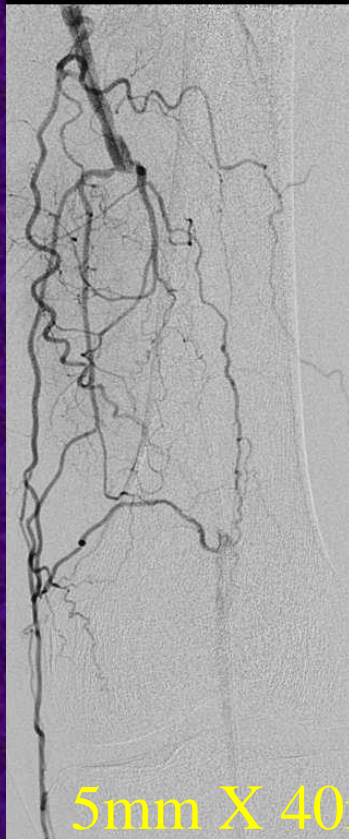
Left popliteal angioplasty



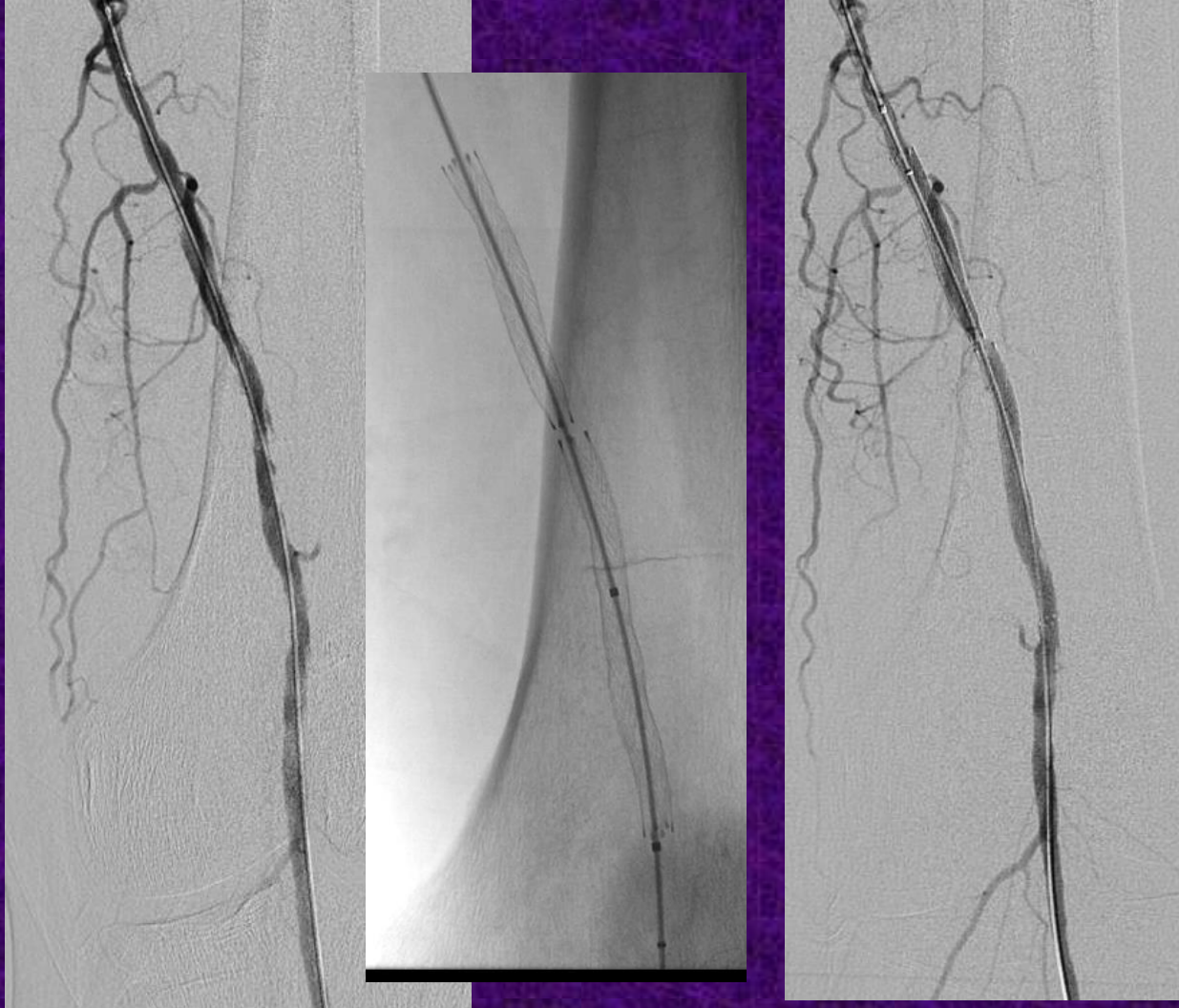
- 48 year old male
- Previous left popliteal angioplasty
- 5 months earlier
- Subintimal technique
- Re-occluded for 2 months

- Antegrade access : 6 Fr sheath
- Repeat subintimal technique

Left popliteal angioplasty



Popliteal angioplasty and stents



- Absolute nitinol
- 6mm X 60mm &
- 6mm X 40mm

- Post dilated
- 17 atmos
- 5.4 mm actual

Popliteal angioplasty and stents

